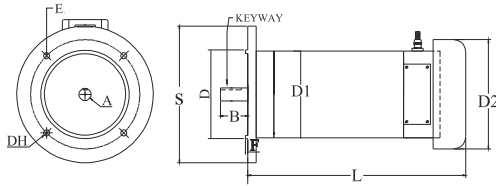




FLANGE MOUNTING

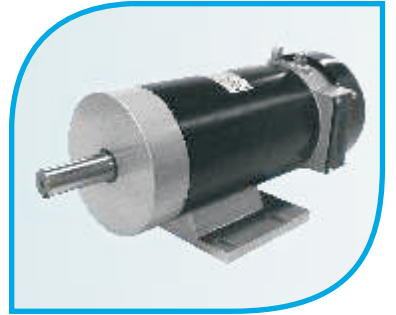
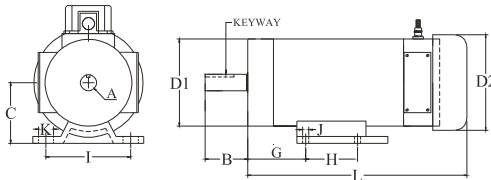


MECHANICAL DIMENSIONS FOR FOOT MOUNTING MOTORS.

D1	FRAME	A	B	C	G	H	I	J	K	KEYWAY
127	127FT	24	62	89	85	76	124	9	24	42X5X4D
142	142FT	24	62	89	85	76	124	9	24	42X5X4D

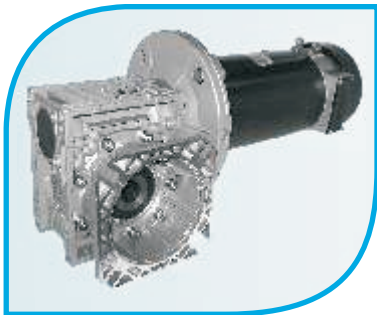
MECHANICAL DIMENSIONS FOR FLANGE MOUNTING MOTORS.

D1	FRAME	A	B	D	S	E	F	DH	KEYWAY
127	80 FR	19	40	130	200	165	3.5	11.5	30X6X3D
142	90 FR	24	50	130	200	165	3.5	11.5	42X8X4D

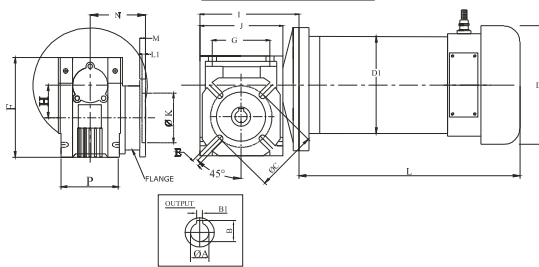


SPECIFICATIONS																	
POWER IN WATTS/HP	SPEED IN RPM		VOLTAGE IN VDC		CURR. IN AMP		TORQUE IN kg-cm		INSL. CLASS	DUTY CYCLE	PROTEC-TION	ENCL.	MOUNT-ING	FRAME	D2	L TEFC	WEIGHT (KG)
	R1	R2	V1	V2	A1	A2	T1	T2									
746/1.0	1500	3000	24	48	39	19.5	48	24	B	S1	IP44	TEFC	FOOT	127FT	160	319	19.0
746/1.0	1500	3000	24	48	39	19.5	48	24	B	S1	IP44	TEFC	FLANGE	80 FR	160	319	
1120/1.5	1500	3000	-	48	-	29	72	36	B	S1	IP44	TEFC	FOOT	127FT	160	368	23.0
1120/1.5	1500	3000	-	48	-	29	72	36	B	S1	IP44	TEFC	FLANGE	90 FR	160	368	
1490/2.0	1500	3000	-	48	-	38.8	96	48	B	S1	IP44	TEFC	FOOT	142FT	160	368	29.0
1490/2.0	1500	3000	-	48	-	38.8	96	48	F	S1	IP44	TEFC	FLANGE	90FR	160	368	

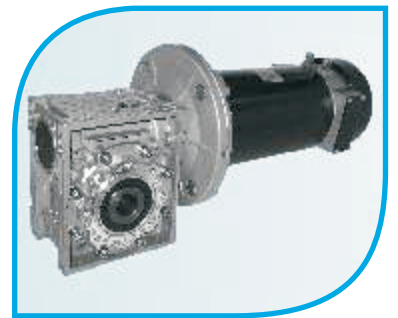
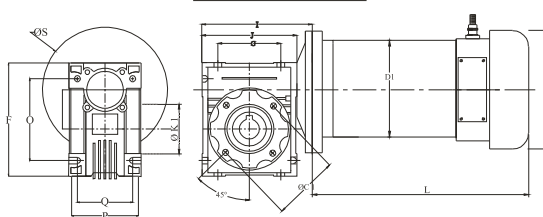
D 127 & 142 BATTERY OPERATED WORM GEARED P. M. DC MOTORS



FLANGE MOUNTING



FOOT MOUNTING



MECHANICAL DIMENSIONS FOR WORM FOOT & FLANGE TEFC MOTORS.

MODEL	A	B1	B	C	C1	E	F	G	H	I	J	K	K1	L1	M	N	O	P	Q	S
ALM 040	18	6	20.8	75	75	9	121.5	70	40	120	101	60	60	4	7	67	90	71	60	200
ALM 050	25	8	28.3	85	85	11	144	80	50	140	121	70	70	5	9	90	104	85	70	200
ALM 063	25	8	28.3	150	95	11	174	100	63	167	146	150	95	6	10	82	130	103	85	200
ALM 075	28	8	31.3	165	115	14	205	120	75	198.5	174	165	115	6	13	111	153	112	90	200
ALM 090	35	10	38.3	175	130	14	238	140	90	232.5	208	152	110	6	13	111	172	130	100	200

SPECIFICATIONS																									
POWER IN WATTS/HP	VOLTAGE IN VDC		CURR. IN AMPS		RATIO				OUTPUT SPEED IN RPM				TORQUE IN KG-CM				GEAR MODEL	INSL. CLASS	DUTY CYCLE	PROTEC-TION	ENCL.	D1	D2	L	WEIGHT (KG)
	V1	V2	A1	A2	R1	R2	R3	R4	S1	S2	S3	S4	T1	T2	T3	T4									
746/1.0	24	48	39.0	19.4	7.5	10	15	20	200	150	100	70	270	350	500	650	050	B	S1	IP44	TEFC	127	160	319	22.5
1120/1.5	-	48	-	29.1	7.5	10	15	20	200	150	100	70	370	480	660	840	063	B	S1	IP44	TEFC	127	160	368	29.2
1490/2.0	-	48	-	39.0	7.5	10	15	20	200	150	100	70	550	710	1020	1330	063	B	S1	IP44	TEFC	142	160	368	35.2